

# MONTHLY MEMBERSHIP PROGRESS REPORT

District 21 S

Results as of: 3/31/2026

GMT:

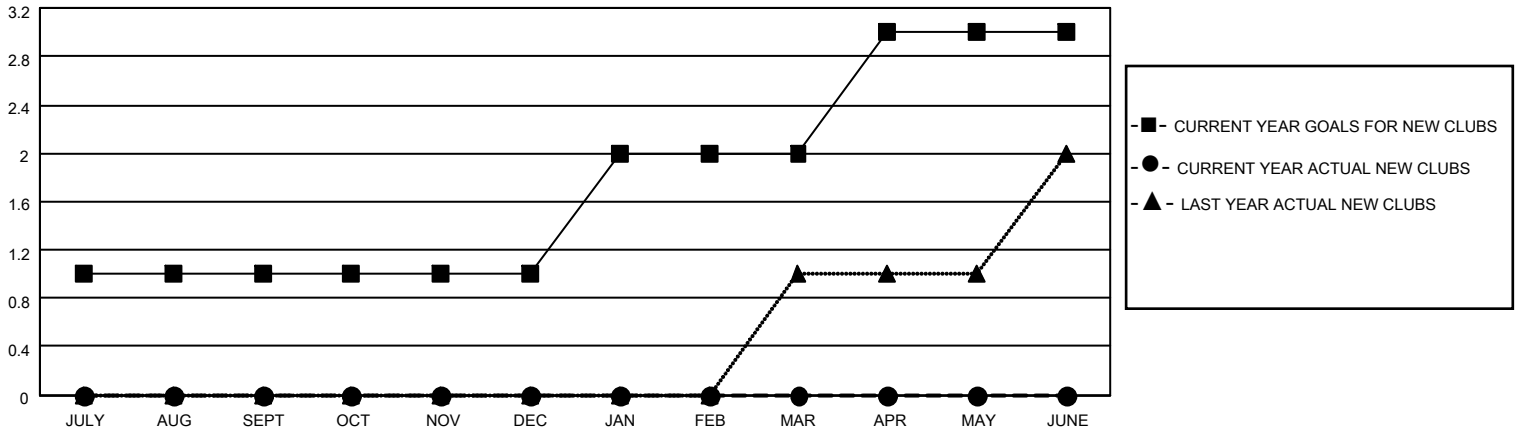
LOCATION ARIZONA

GMT CA

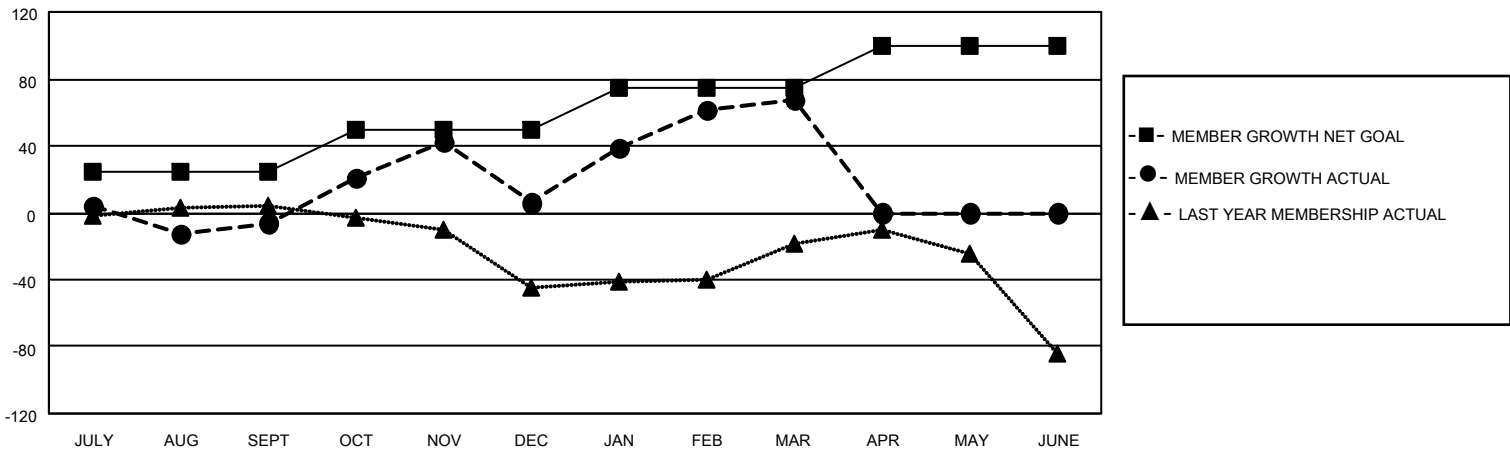
Clubs			
RESULTS FOR 2025-2026			
QUARTER	NEW CLUB GOAL	NEW CLUBS	DROPPED CLUBS
JULY/AUG/SEPT	1	0	1
OCT/NOV/DEC	0	0	0
JAN/FEB/MAR	1	0	0
APR/MAY/JUNE	1	0	0

Members			
RESULTS FOR 2025-2026			
QUARTER	MEMBER GROWTH NET GOAL	MEMBER GROWTH ACTUAL	DROPPED MEMBERS ACTUAL (including transfers)
JULY/AUG/SEPT	25	60	46
OCT/NOV/DEC	25	83	65
JAN/FEB/MAR	25	98	28
APR/MAY/JUNE	25	0	0

GOALS AND ACTUAL NEW CLUBS CUMULATIVE



GOALS AND ACTUAL MEMBERS CUMULATIVE



DROPPED CLUBS: 1  DROPPED MEMBERS DECEASED 15 CLUB CANCELLED 0 OTHER 124 TOTAL 139	28 CLUBS OF 43 ADDED 1 OR MORE NEW MEMBERS	<b>GENDER DISTRIBUTION</b> MALE 553 (49.46%) FEMALE 564 (50.45%)
	<a href="#">CLICK HERE FOR CUMULATIVE MEMBERSHIP DATA</a>	TOTAL FAMILY UNIT MEMBERS 234 FAMILY MEMBERS PAYING HALF DUES 118